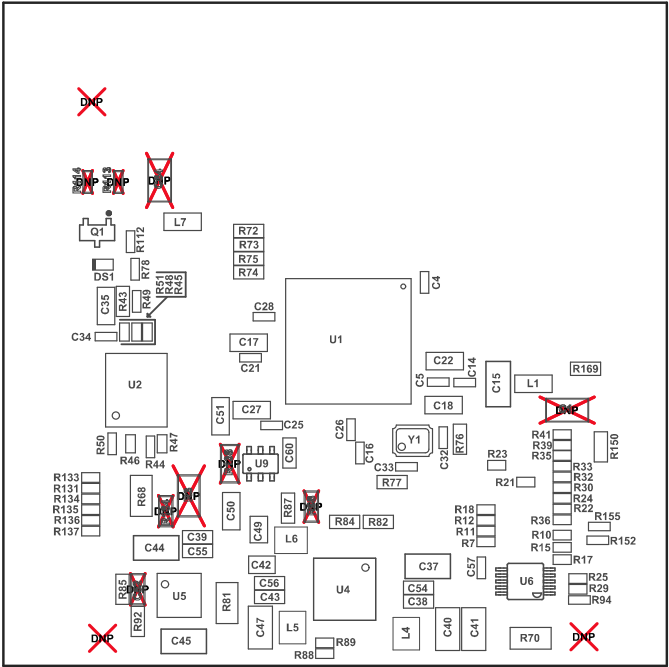
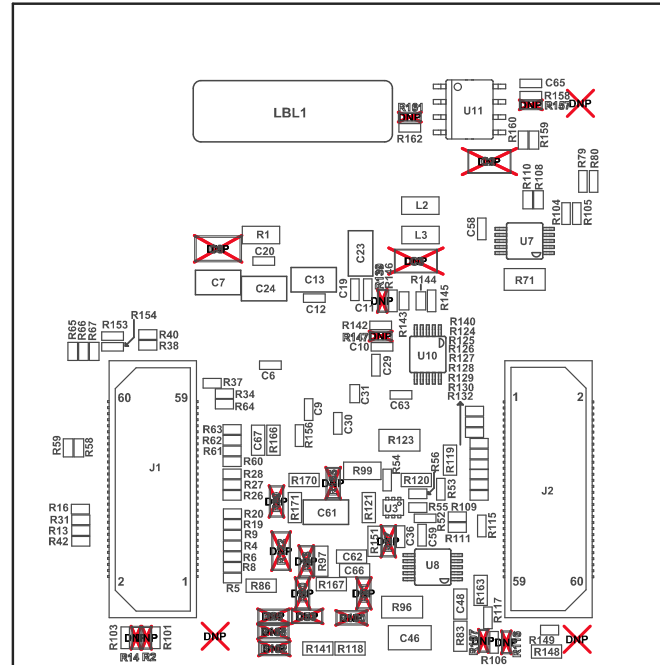


ZZ1 ■Install label in silkscreened box after final wash. Text shall be 8 pt font. Text shall be per the Label Table in the PDF schematic.
ZZ2 ■These assemblies are ESD sensitive, ESD precautions shall be observed.
ZZ3 ■These assemblies must be clean and free from flux and all contaminants. Use of no clean flux is not acceptable.
ZZ4 ■These assemblies must comply with workmanship standards IPC-A-610 Class 2, unless otherwise specified.





COMPONENTS MARKED 'DNP' SHOULD NOT BE POPULATED.
 ASSEMBLY VARIANT: 001

PCB VIEWED FROM BOTTOM SIDE	BOARD #: PROC073	REV: A	SUN REV: Not In VersionControl
Assembly Bottom Layer	TID #: N/A		
PLOT NAME = Bottom Assembly Drawing	GENERATED : 9/5/2018 2:51:49 PM	TEXAS INSTRUMENTS	